

The Autodesk and Matterport Partnership: Integrating Matterport into Autodesk Construction Cloud

Speed up your AEC workflows and resolve issues faster with 3D visual clarity

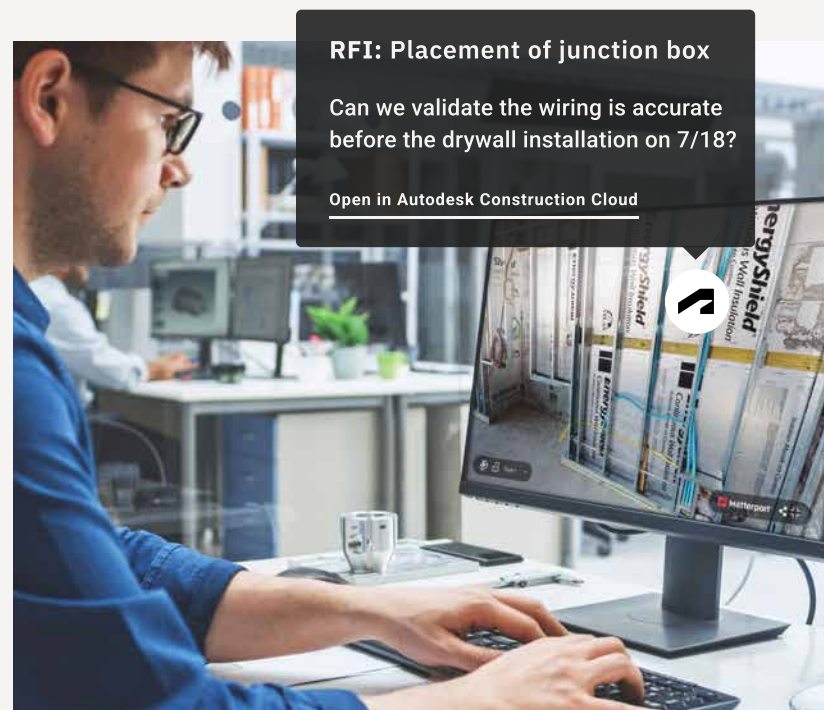
The Autodesk Construction Cloud (ACC) and Matterport partnership provides groundbreaking value for construction professionals by integrating spatial data technology with leading construction management software. Elevate your architectural engineering and construction workflows, streamline collaboration, and effectively manage data with this powerful integration that brings Matterport's digital twins directly into your Autodesk Construction Cloud project workspace.

Unparalleled Benefits at Your Fingertips

By connecting Matterport to Autodesk Construction Cloud, users can now:

- **Streamline workflows:** Save time creating as-built models by scanning site conditions with Matterport, generating initial state BIM file needed for your design process
- **Improve communication and coordination:** Pin issues and RFIs to exact locations on a job site represented in the Matterport digital twin, providing unmatched site clarity to effectively reduce miscommunications and project delays.
- **Increase visibility and accountability:** Leverage the visual detail of Matterport digital twins to help fortify actionable insights using Reports in Autodesk Construction Cloud, enabling accurate analysis of usage, adoption, and operational efficiency.

Note: To use the integration, you will need an active Matterport Business subscription plan or above. Create an account or learn more about upgrading plans here: <http://matterport.com/pricing>



Key Features

The Autodesk Construction Cloud and Matterport integration alleviates common pain points in the construction industry. It empowers construction professionals with a user-friendly, cost-effective solution that enhances collaboration, streamlines documentation, and ultimately drives project success while providing photorealistic, visual context of site conditions.



Autodesk Docs

Make Matterport-generated files representing the as-built environment (.dwg, .ifc, .obj, .rvt, .xyz) accessible to the project stakeholders in your ACC Project.

Create issues on a Matterport digital twin that sync across your project for all stakeholders to view.



Autodesk Build

Enhance project management by creating, assigning, and tracking issues and RFIs through your Autodesk Build dashboard and Matterport digital twin.



Insights

Add the Matterport Partner Card to your dashboard to provide spatial context alongside your project summary.



Revit Plugin

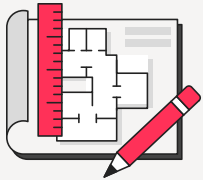
Streamline your workflow by importing Matterport point cloud files (.XYZ and .E57) and BIM files (.rvt, .ifc) directly into Revit. The Revit plugin automates the conversion process from point cloud formats to the required Autodesk format, .RCP, and removes the need to go to an additional piece of software.



Matterport BIM File

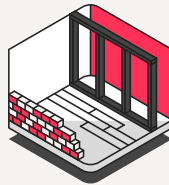
Generate your initial state LOD 200 BIM file in as few as two business days allowing teams to focus on design processes rather than manual model creation to jumpstart design projects quickly. Matterport BIM file is a service which translates Matterport captured scan data to your initial state Building Information Model. Architects, designers, and building engineers can reflect the current state of any building with a 3D model more quickly, easily, and cost-effectively than ever.

Use Cases



Design and Preconstruction

Utilize Matterport digital twins to create initial state as-built models, facilitating the design process, and identifying potential site-related challenges preemptively.



Construction Management

Enhance project coordination and communication by providing unmatched visual clarity and spatial awareness of jobsite issues and RFIs to stakeholders.



Quality Control and Post-construction

Monitor construction progress and quality using Matterport digital twins, facilitating on-time delivery, and reducing rework expenses.

Empowering Stakeholders

The Autodesk and Matterport integration offers significant benefits for all stakeholders involved:

- **Owners** enjoy improved communication, collaboration and a clear view into projects from various teams, ensuring timely delivery of projects.
- **Contractors** experience streamlined workflows, enabling them to complete their work on time while minimizing errors and rework while also documenting the progress of their work to submit for invoicing.
- **Architects** gain greater visibility into field implementation, allowing them to suggest changes as necessary.



Conclusion

Bring the power of Matterport visual clarity into your AEC projects with the valuable Autodesk and Matterport integration. Enhance your workflows and eliminate the guesswork from your construction lifecycle, boosting productivity, visibility, and collaboration across your project team. Experience the new era of construction technology for architects, project managers, and all project stakeholders by harnessing the Autodesk Construction Cloud and Matterport integration.